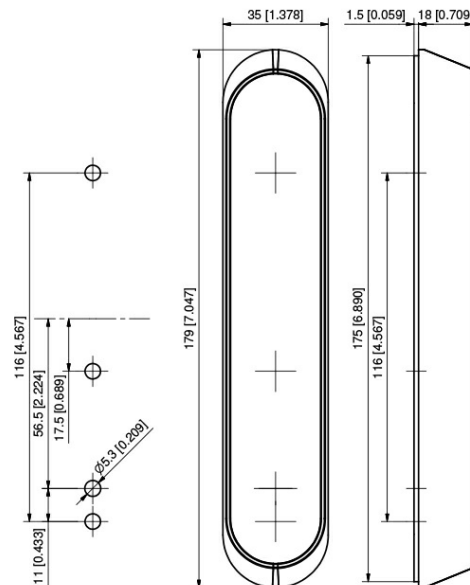


MLE5000 KP RFID Antenna



- Capacitive keypad for two-factor authentication
- Managed with MLM Administration Suite
- LED visualization of lock status
- TCP/IP Ethernet
- 125kHz HID Prox
- 13.56MHz HID iClass, Mifare Classic, Mifare DESFire EV1, Mifare DESFire EV2
- Storage capacity for 2,000 transponders
- Storage capacity for 500 events (offline) and 30 time profiles

Dimension

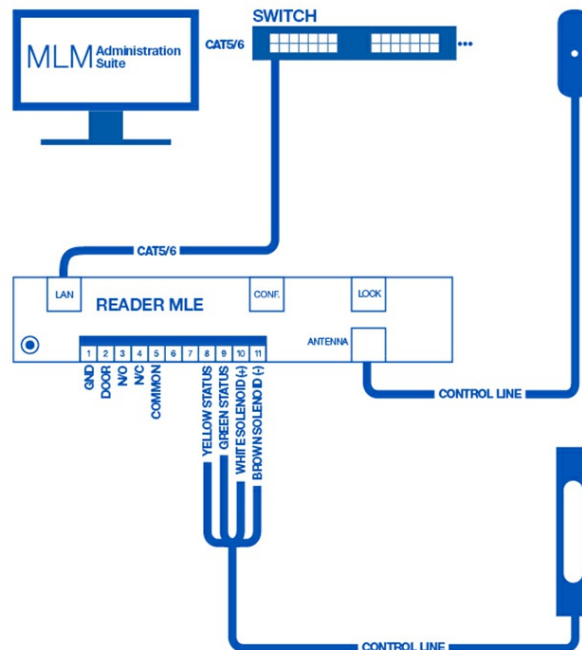


MLE5000 KP RFID Antenna

Technical Details

- Power Supply: 12/24/48 V ± 10% (DC)
(use the appropriate power supply for the connected lock)
- Bias-Current: 40mA (DC)
- Max current rating: RJ12 – 1,4A (DC)
- Max current rating: Terminal – 3A (DC)
- Operating Temperature: -20C to +70C
- IP65 according to DIN EN 60529
- IK05 Impact resistance

Connection

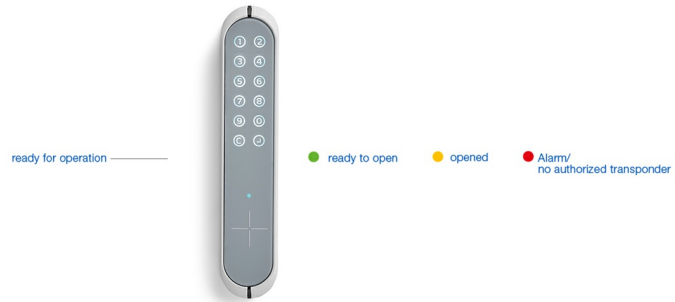


MLE5000 KP RFID ANTENNA

The MLE5000 KP communicates via the TCP / IP protocol across the network directly to the MLM Administration Suite Software platform. Each controller receives its own IP address and UID. This system allows MLM users to control third party locks such as magnetic, electric strikes or the MLE series. Ideal applications include OSP equipment, telecommunications enclosures, storage lockers or building doors.

MLE5000 KP RFID Antenna

LED Status



MLE5000 KP RFID Antenna

Item number

MLE5000KP 125kHz (antenna + controller
without handle)
602-8019.00-00000.

MLE5000KP 13.56MHz (antenna + controller
without handle)
602-8015.00-00000

Delivery

Antenna housing