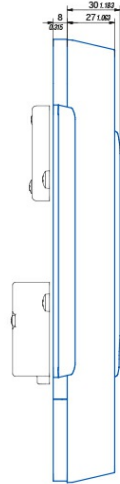
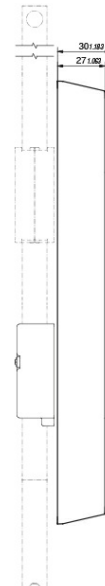
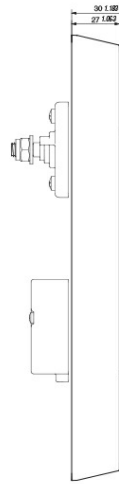
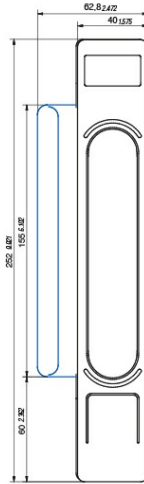
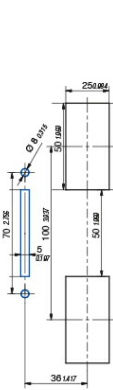




- Label holder with customizable backlit LED
- LED for handle and temperature status
- No key override
- RS485
- 125kHz HID Prox
- 13.56MHz HID iClass, Mifare Classic, Mifare DESFire EV1, Mifare DESFire EV2
- Storage capacity for 2,000 cards and pins
- Storage capacity for 500 events (offline) and 30 time profiles

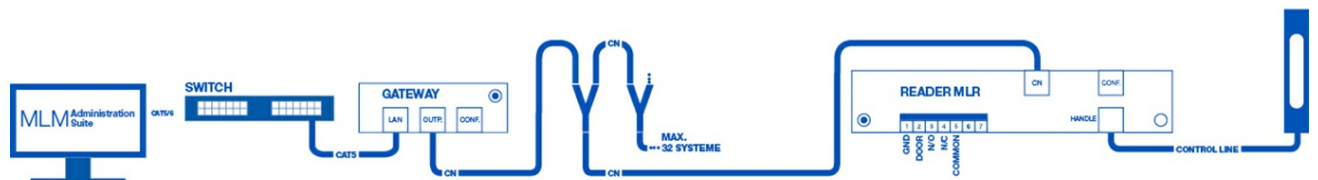
Dimension



Technical Details

- Power Supply: 12 V \pm 10% (DC)
- Bias-Current: 40mA (DC)
- Max Current: 440mA (DC)
- Temperature range: -20C to +70C
- Sheet metal thickness from 1.5-2mm (plus powder coating)
- Top mounting screws Tq to 1.0-1.2Nm
- Bottom cap screws Tq to 0.4Nm

Connection



LED Status

Unauthorized
Access or
"Blocking Period"

Alarm

Door open

Handle
open

Ready for
operation

Access
Authorized

"Green
Period"

Temperature alarm

Temperature okay



Item number

MLR3000 (125 kHz) for Offset
610-9707.00-00000

MLR3000 (125 kHz) for Rod Latch
610-9701.00-00000

MLR3000 (125 kHz) for Cam Latch
610-9739.00-00000

MLR3000 (125 kHz) (Rittal)
610-9745.00-00000

MLR3000 (13.56 MHz) for Offset
610-9707.00-11356

MLR3000 (13.56 MHz) for Rod Latch
610-9701.00-11356

MLR3000 (13.56 MHz) for Cam Latch
610-9739.00-11356

MLR3000 (13.56 MHz) (Rittal)
610-9745.00-11356

Delivery

Swinghandle

Additional products

Power supply (12/24 V DC)

Door contact